

**gemini**  
ITALY

**PERSONAL WEARABLE  
IONIC AIR PURIFIER**

**MODEL NO.: GAP5W/GAP5G**



A GILMAN GROUP BRAND

**Please read and retain for future reference.**

## **SAFETY INSTRUCTION - GENERAL**

- Use this appliance solely in accordance with these instructions.
- This appliance is for household personal use only, not for commercial purpose.
- Remove all packaging material from the appliance before use.
- This appliance shall not be used by children of 0 to 8-year old.
- This appliance can be used by children older than 8-year old and persons with reduced physical, sensory or mental capabilities or lack of experience and knowledge, but only if they have been given supervision or instruction concerning use of the appliance in safe way and understand the hazards involved.
- Children should be supervised to ensure that they do not play with the appliance.
- Cleaning and maintenance must not be done by children.
- Have any repairs carried out solely by a qualified electrician. Never try to repair the appliance yourself.
- Do not handle the plug or appliance with wet hands.
- Do not immerse the main body in water.
- Children shall not play with the appliance.
- Do not leave the appliance unattended when connected to the mains supply.
- Only use the attachments/accessories supplied with the product.

## **SAFETY INSTRUCTION - ELECTRICITY AND HEAT**

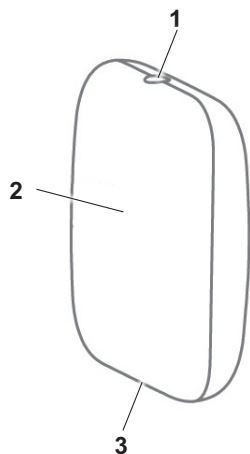
- Make sure that the appliance, the power cord do not make contact with water.
- Make sure that the appliance, the power cord do not make contact with hot surface, such as a hot hob or naked flame.
- Check the appliance's power cord regularly to make sure it is not damaged.
- Do not use the appliance if the power cord is damaged. If the power cord is damaged, it must be replaced by an electrical technician or a person with similar qualification, in order to avoid any hazards.

## **SAFETY INSTRUCTION - DURING OPERATION**

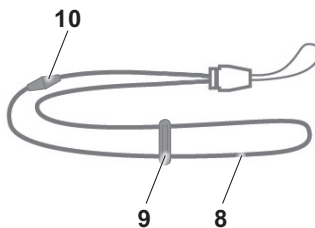
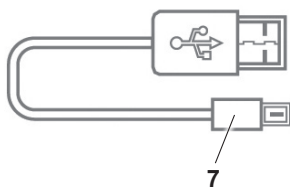
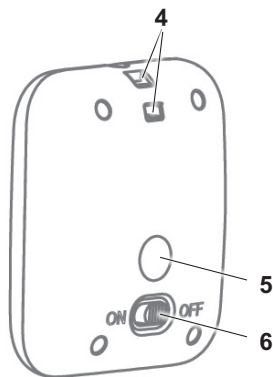
- Do not pick up the appliance if falls into water. Do not use the appliance again.
- Never immerse the appliance, the power cord in water or any liquid.
- Do not use the liquids, such as water or flammable solvents to clean the product, please use a soft cloth to clean when product not in running.
- Please keep air circulation and do not cover Negative ion Emitter when the product is running.

# PRODUCT OVERVIEW

Front view

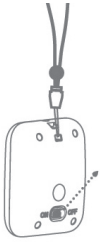


Back view

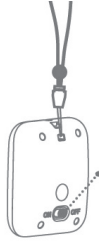


1. Negative Ion emitter (Carbon brush)
2. LED indicator
3. USB charging port
4. Sling hole
5. Magnet
6. Power On/Off switch
7. USB charging cable
8. Neck sling
9. Stopper
10. Child safety clip

# OPERATING INSTRUCTION



Turn on the air purifier:  
turn the switch to  
on position.



Turn off the air purifier:  
turn the switch to  
off position.

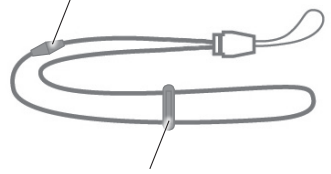


● Negative ion

Blue indicator: working

**Child safety clip:** When there is a foreign object pulling the sling, the child safety clip will automatically disassemble.

**Child safety clip**

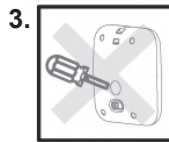
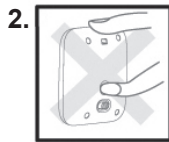


**Stopper:** to adjust the desired length of the sling.

**Stopper**

**Warning:** To obtain a better performance, please keep the carbon brush straight and DO NOT remove it.

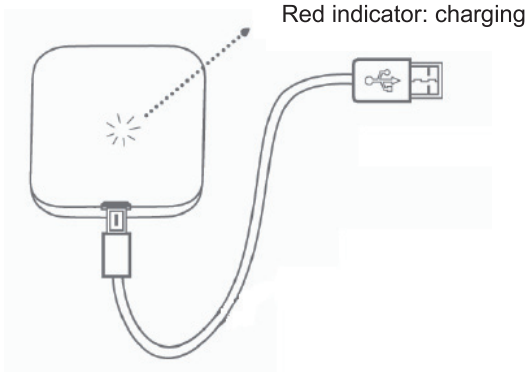
**Warning:**



1. To avoid generating electrostatic or cause uncomfortable feelings. DO NOT touch USB port and negative ion emitter or touch the magnet and ion emitter at the same time. (Pic 1 & 2)
2. To obtain more and effective negative ion. DO NOT remove the magnet at the backside. (Pic 3)
3. Please do not disassemble the product. (Pic 4)
4. When any user uses or body install any electronic/ electric therapy devices inside, please do not use this product.

### Charging mode:

- Note: Please turn the power off of the air purifier before charging.
- Connect the power source (5V) to the product with the provided USB cable.
- Fully charging time around 4 hours.
- Working time around 15 hours after fully charged.
- When the charge is full, the indicator will auto-off.



## TROUBLE SHOOTING

PROBLEM	CAUSE	SOLUTION
Working indicator dis-lighting	Power is not on	Turn the switch to on position
	Not enough battery	Please refer to page 6 charging mode
Charging indicator dis-lighting	Disconnect of the USB charging cable and port	Reconnect USB charging cable and port
	USB charging cable is broken	Use a new USB charging cable

## PRODUCT SPECIFICATIONS

Model no.: GAP5W/ GAP5G  
Voltage: DC 5V  
Power: < 1W  
Net weight: around 0.03kg  
Product dimensions: 47(W) x 57 (H) x 22 (D) mm

閱讀下列說明事項並請妥善保管，以供日後參考。

## **安全指引 - 一般安全**

- 請按照這些說明事項，使用本產品。
- 本產品僅供家用，不作商業用途。
- 使用前，請將所有包裝材料拆除。
- 0至8歲的兒童不應使用本產品。
- 超過8歲的兒童可使用本產品，但請勿由肢體不健全、感覺或精神上有障礙或缺乏相關經驗和知識的人使用，除非有負責他們安全的人對他們使用本產品進行監督或指導。
- 請務必看顧好兒童，以確保他們不玩耍本產品。
- 兒童不應清潔或維修本產品。
- 當需進行任何維修，必須由專業維修人員進行維修。永遠不要嘗試自己修理本產品。
- 手濕時不可以接觸電源插頭或本機。
- 主機不可以浸入水中。
- 兒童不可以把玩本機。
- 本機開著後不可以無人監管。
- 只使用隨機附送的配件。

## **安全指引 - 電子和熱能產品**

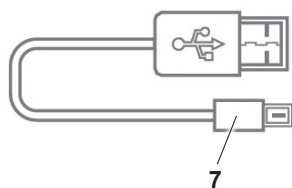
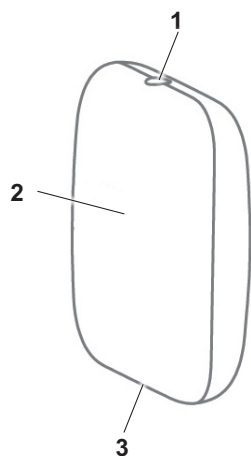
- 確保本產品、電源線不與水接觸。
- 確保本產品、電源線不接觸發熱表面，如明火。
- 定期檢查本產品的電源線以確保其沒有損壞。
- 如果電源線損壞，請勿使用其產品，並須由專業維修人員來更換，以避免出現任何危險。

## **安全指引 - 操作期間**

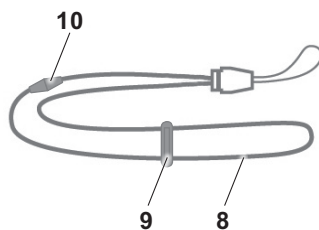
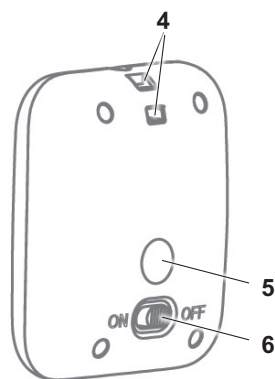
- 如果本產品落入水中，並且不要再次使用本產品。
- 切勿將本產品、USB 電源線浸入水中或其他液體中。
- 切勿用液體清洗或潑灑本產品，如水、清洗劑或易燃溶劑等，如需清潔，請將電源斷開，使用柔軟抹布擦拭。
- 請保持本產品周圍空氣暢通無阻，切勿覆蓋本產品的負離子發射器。

# 部件示意圖

正面

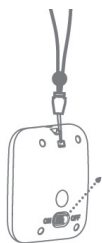


背面

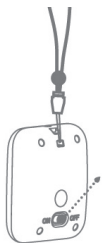


1. 負離子發射器 (碳刷)
2. LED 指示燈
3. USB 充電接口
4. 繩子孔
5. 磁鐵
6. 開 / 關鍵
7. USB 充電線
8. 頸繩
9. 塞子
10. 兒童安全帶

# 使用說明



開啟空氣淨化器:  
將開 / 關鍵推至on位置



關閉空氣淨化器:  
將開 / 關鍵推至off位置



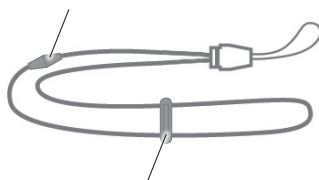
● 負離子

藍色指示燈：工作中

**兒童安全扣：**當異物拉動頸繩時，兒童安全扣將會自動斷開。

**塞子：**調節所需的頸繩長度。

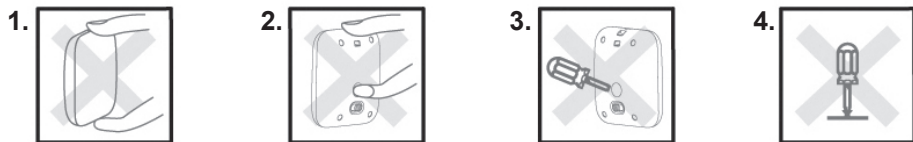
兒童安全帶



塞子

**警告：**為了獲得更好的效果，請保持碳刷直身及不能將其取出。

**警告：**



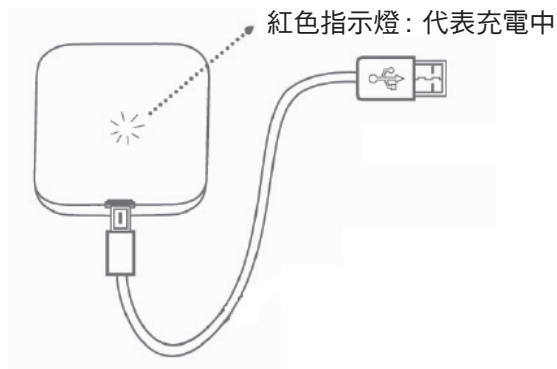
1. 為避免產生靜電或引致不適，請勿同時觸摸USB端口和負離子發射器或磁鐵和負離子發射器。(圖1及圖2)
2. 為了獲取更多有效的負離子量，請勿拆除背面的磁鐵件。(圖3)
3. 請不要拆除產品。(圖4)
4. 若用戶使用或體內植入任何電子治療儀器，請勿使用此產品。



## 充電:

注意：請先關閉空氣淨化器，再進行充電。

- 將USB電源輸出插頭插到本機上，再將USB插到5V電源位置。
- 充滿電時間：約4小時左右。
- 工作時間：充滿電後，約工作15小時左右。
- 充滿電時，紅色指示燈會自動熄滅。



## 疑難排除

問題	原因	解決方法
工作時指示燈熄滅	未開啟電源	將開 / 關鍵推至on位置
	電池電力不足	請參考第11頁充電部分
充電時指示燈熄滅	連接USB口的充電線中途被斷開	重新連接USB充電線
	USB 充電線損壞	使用新的USB 充電線

## 產品規格

型號： GAP5W/ GAP5G

電源： DC 5V

功率： < 1瓦

重量： 0.03公斤

產品尺寸：47 (闊) x 57 (高) x 22 (深) 毫米





請記錄下列產品資料

- 型號
- 機身編號
- 經銷商名稱
- 購買日期

本產品不斷改進中，如功能有所更改，恕不另行通知，如有疑問，請與客戶服務中心聯絡，不便之處，敬請原諒。

說明書內容以英文版本為準

**ToolBox Customer Service Centre 客戶服務中心：**  
4/F, DCH Building, 20 Kai Cheung Road, Kowloon Bay, Hong Kong  
香港九龍灣啓祥道20號大昌行集團大廈4樓

Customer Service Hotline 客戶服務熱線：(852) 8210 8210  
Service E-mail 電郵地址：8210service@gilman-group.com  
Please register now at 請即上網登記：www.toolbox.hk  
Website 網址：www.gilman-group.com

Proudly Serviced by:



**太平家庭電器**